

### 3D view of feature planting

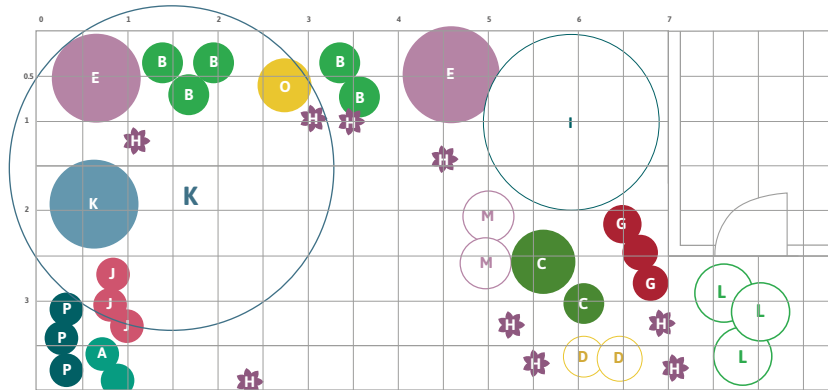


### Border Area



### Planting Plan

#### Grid - 0.5m



**This border has been designed for a west-facing aspect within the garden but it will work in south, south-east or south-west facing locations.**

'When creating the planting plan for this garden I chose a base of evergreens with lots of additional seasonal colour. Aim to have good "bones" and a good structure amongst your planting schemes with evergreens and grasses that maintain a presence in autumn and winter,' says Linda. 'Add colour and scent with seasonal plants throughout spring and summer; these will form the character of your garden. Your garden should change and evolve through the seasons and not become static.'

The tree *Crataegus laevigata* 'Paul's Scarlet' is the main presence in this border. It produces masses of deep scarlet-pink, double flowers in May and attractive small red haws in the autumn and, when mature, it develops a beautiful shape. It will tolerate all aspects and will grow happily in either sheltered or exposed locations. 'It's a great choice for a small garden,' says Linda.

The *Cornus sericea* 'Flaviramea' (yellow stemmed Dogwood), with its colourful upright stems, is a great plant to add interest to the back of this garden in winter. Its nectar/pollen rich flowers are good for pollinating insects such as bees in early summer.

You will find the full list of plants in the **planting plan**.

#### Border Plant List

A	<i>Achillea millefolium</i> 'Terracotta'
B	<i>Bergenia cordifolia</i>
C	<i>Buxus sempervirens</i> [Box Clipped]
D	<i>Carex testacea</i>
E	<i>Cornus sericea</i>
F	<i>Crataegus laevigata</i> 'Paul's Scarlet'
G	<i>Dryopteris erythrosora</i>
H	<i>Erigeron karvinskianus</i>
I	<i>Fatsia japonica</i>
J	<i>Knautia macedonica</i>
K	<i>Nandina domestica</i>
L	<i>Polystichum setiferum</i>
M	<i>Salvia</i> 'Amistad'
N	<i>Stipa tenuissima</i> aka <i>Nassella tenuissima</i>
O	<i>Trachelospermum jasminoides</i>
P	<i>Veronicastrum virginicum</i>