

Let's Grow
BORD BIA
Bloom

Easy Steps to Dream Gardens

Garden Designs from Bloom Award-Winning Designers



The Plant Lovers' Garden

DESIGNER: PATRICIA TYRRELL



Easy Steps to Dream Gardens

What is 'Easy Steps to Dream Gardens'?

Brought to you by Bord Bia Bloom, Easy Steps to Dream Gardens is a new initiative designed to help you plant your own show garden at home.

We have worked with seven of Bloom's award-winning show garden designers to create individual garden designs suited to every lifestyle and location.

What are the benefits of using garden designs like these?

The gardens have been designed by some of Ireland's top garden designers and landscape architects who are experts in assessing outdoor spaces and creating beautiful designs that meet the needs of garden owners.

These designs have been carefully considered to provide year-round interest and are tailored to suit various conditions. There is a solution for almost any garden, whether it sits in full-shade, dappled shade or enjoys all-day sun.

How have the gardens been designed?

The seven designs are based on a garden size of 15 metres x 9 metres. However, elements from all the designs can be adapted to suit your own outdoor space, whatever the size or location.

Each of the seven design packs in the series feature an easy-to-follow planting plan and detailed planting information. Colour-, scent- and nature-friendly, the planting plans can be implemented in your garden

The Plant Lovers' Garden

DESIGNER: PATRICIA TYRRELL



This south-east facing garden features an abundant display of flowers and will suit any location that enjoys good sunshine.

'The design of this garden is quite natural,' says garden designer, Patricia Tyrrell. 'It has been inspired by meadows with lots of flowers and grasses. I like to feel like I am enclosed in the plants in my garden so here I have brought the planting quite close to the house.'

Patricia has kept the hard landscaping in this scheme simple, allowing the plants to be the main attraction. The patio closest to the house includes a built-in bench – 'the ideal spot for morning coffee' – while the centre of the garden features space for a table and chairs alongside a second built-in bench and barbecue.

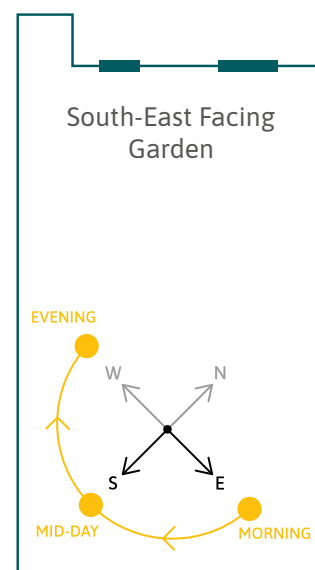
The garden has been designed to give enjoyment throughout the year. 'I pride myself on creating gardens that always have something of interest and there is always something new coming in here,' says Patricia.

Boundaries are greened by using climbers rather than a hedge and Patricia has included no less than 10 climbers in this scheme, including the fragrant *Trachelospermum jasminoides* (Star Jasmine). 'People want colour but often overlook scent, which is a shame as scent is one of the most important senses for memory.'

The planting – set out in Patricia's planting plan – is a very easy arrangement, she says. 'Don't worry about making mistakes, just copy nature and cover the ground – this gives more colour. I believe a garden shouldn't have a huge amount of rules. You should be able to have fun with it.'



Patricia Tyrrell is a garden designer and horticulturist. She seeks to create landscapes that are not just beautiful, but contribute positively to the environment. Patricia has won two Gold Medals at Bord Bia Bloom.



Designer's Tips

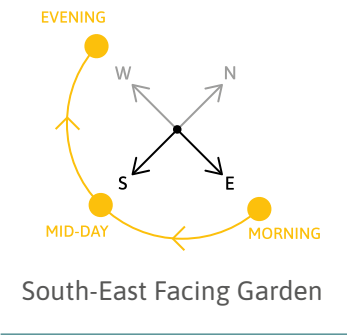
THE PLANT LOVERS' GARDEN

Patricia's tips for creating a natural garden.

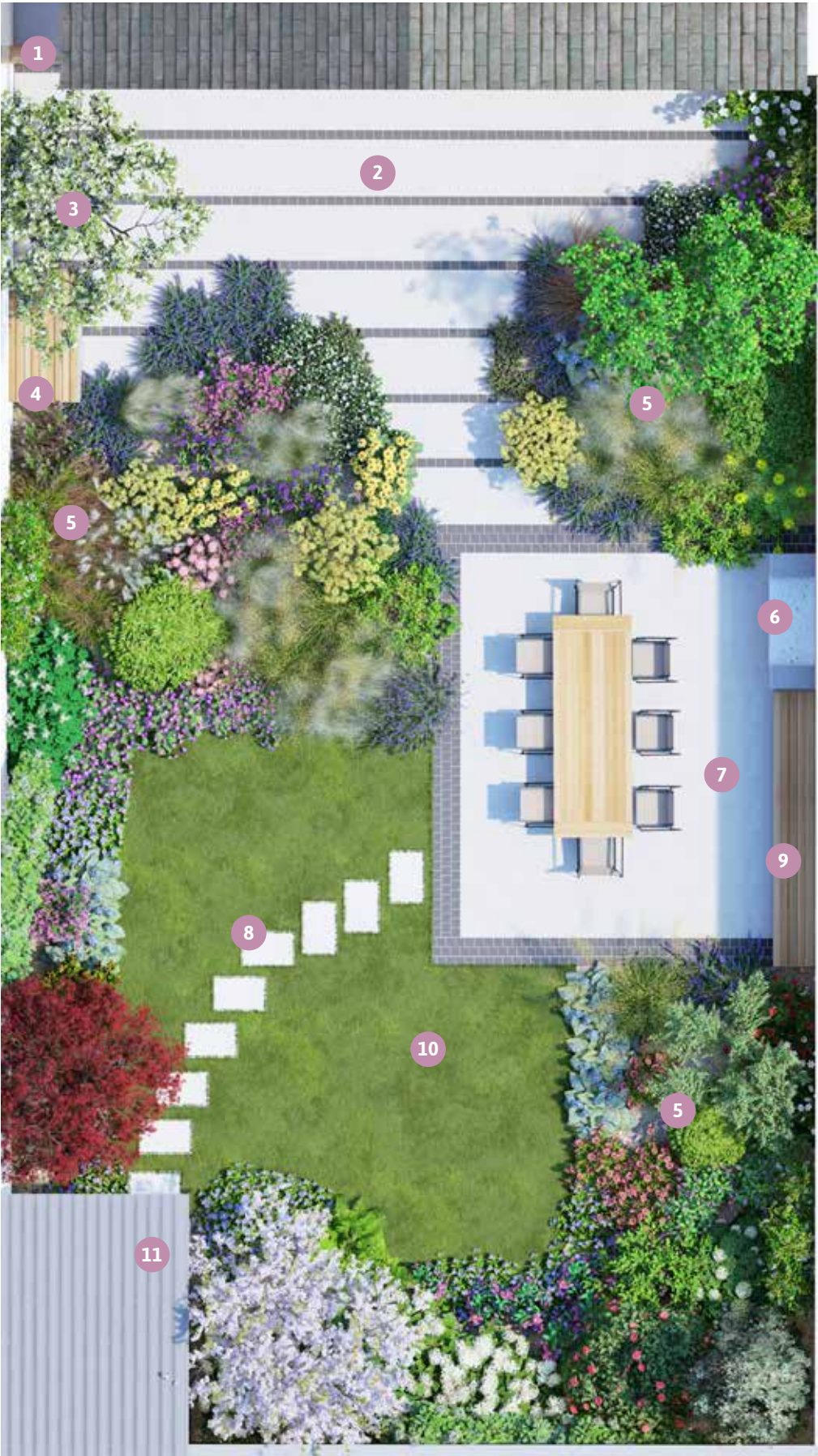


Garden Plan

THE PLANT LOVERS' GARDEN



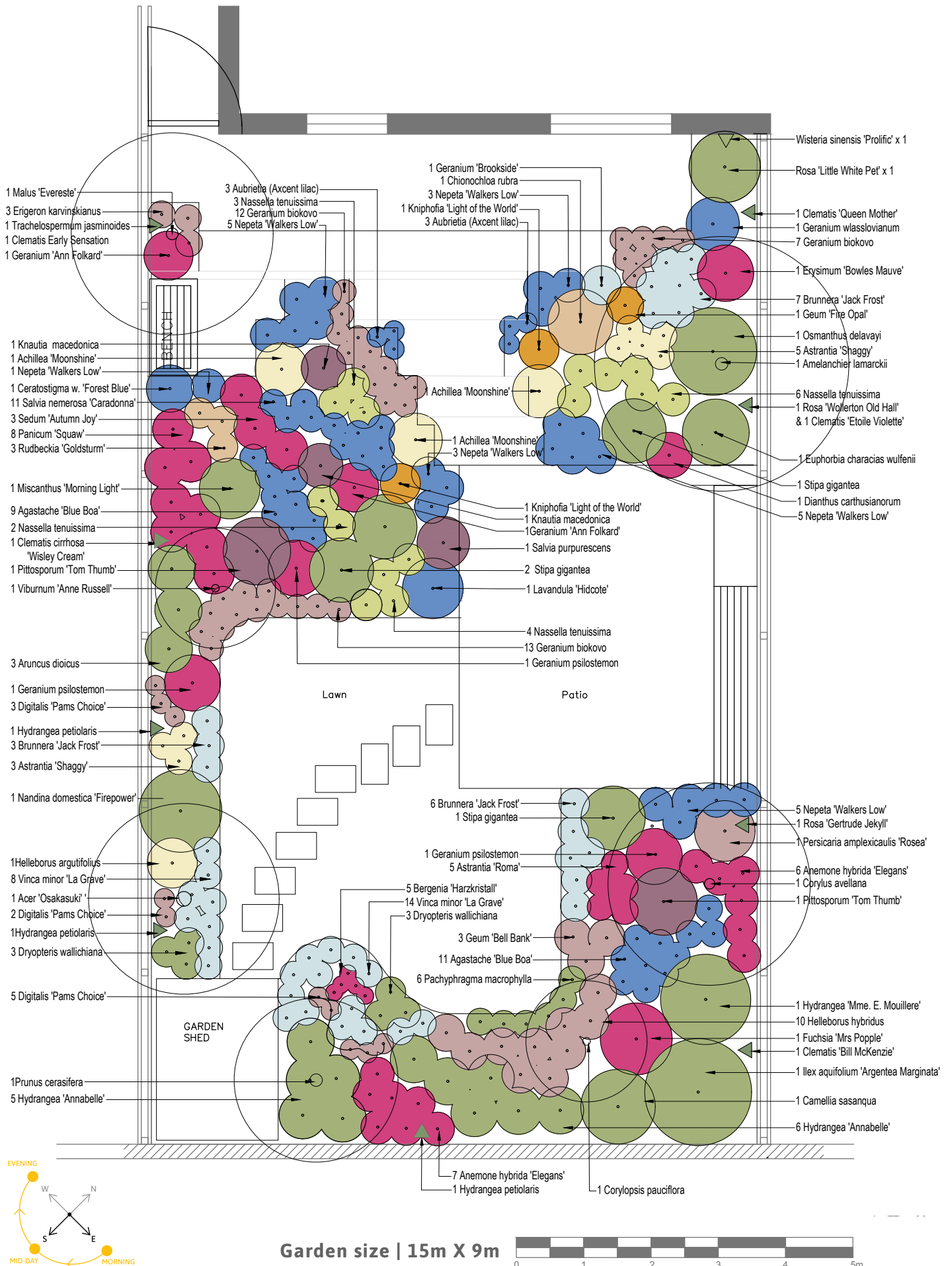
- 1 Gate
- 2 Paving Area
- 3 Feature Tree
- 4 Bench
- 5 Planting
- 6 BBQ
- 7 Patio
- 8 Stepping Stones
- 9 Bench Seat - Built-In (Larch or Douglas Fir)
- 10 Lawn
- 11 Garden Shed



Garden size | 15m X 9m

Planting Plan

THE PLANT LOVERS' GARDEN



Plant	Pot Size	Qty
Trees		
Acer palmatum 'Osakazuki'	15L	1
Amelanchier lamarckii	7.5/10L	1
Malus 'Evereste'	7.5/10L	1
Prunus cerasifera	10/15L	1
Corylus avellana	5/10L	1
Ilex aquifolium 'Argentea Marginata'	30L	1
Shrubs		
Corylopsis pauciflora	5L	1
Viburnum 'Anne Russell'	5L	1
Fuchsia 'Mrs. Popple'	3L	1
Camellia sasanqua	5L	1
Hydrangea aborescens 'Annabelle'	5L	11
Hydrangea 'Mme. E. Mouilliere'	3L	1
Lavandula 'Hidcote'	3L	1
Osmanthus delavayi	5L	1
"Nandina domestica 'Firepower'	5L	1
Rosa 'Little White Pet'	3L	1
Vinca minor 'Gertrude Jekyll'	2/3L	20
Grasses + Ferns		
Dryopteris wallichiana	3L	6
Miscanthus 'Morning Light'	3L	1
Stipa gigantea	3L	4
Nassella tenuissima aka Stipa tenuissima	2.5L	13
Climbers		
Clematis 'Early Sensation'	3L	1
Clematis 'Etoile Violette'	3L	1
Clematis 'Queen Mother'	3L	1
Clematis Bill McKenzie	3L	1
Clematis cirrhosa Wisley Cream	3L	1
Hydrangea petiolaris	3L	3
Rosa Gertrude Jekyll	3L	1
Rosa Wollerton Old Hall	3L	1
Trachelospermum jasminoides	3L	1
Wisteria sinensis 'Prolific'	3L	1

Plant	Pot Size	Qty
Perennials		
Achillea Moonshine	2.5L	3
Agastache 'Blue Boa'	2.5L	11
Anemone hybrida 'Elegans'	3L	10
Aruncus dioicus	3L	3
Astrantia 'Roma'	3L	7
Astrantia 'Shaggy'	3L	6
Aubrietia axcent lilac	p9	6
Bergenia 'Harzkristall'	2.5L	5
Brunnera macrophylla 'Jack Frost'	3L	17
Cerastigma willmottianum	3L	1
Chionochloa rubra	2.5L	1
Dianthus carthusianorum	2.5L	1
Digitalis 'Pams Choice'	2.5L	10
Erigeron karvinskianus	p9	3
Erysimum 'Bowles Mauve'	2.5L	1
Euphorbia characias wulfenii	3L	1
Geranium 'Roxanne'	2.5L	1
Geranium Ann Folkard	2.5L	1
Geranium biokovo	3L	28
Geranium psilostemon	3L	2
Geranium wlasslovianum	p9	1
Geum 'Bell bank'	3L	3
Geum 'Fire Opal'	3L	1
Helleborus argutifolius	3L	1
Helleborus hybridus (diff flower types)	3L	10
Knautia macedonica	3L	2
Kniphofia Light of the World	3L	1
Nepeta Walkers Low	3L	14
Pachyphragma macrophylla	2.5L	8
Panicum virgatum 'Squaw'	2.5L	6
Persicaria rosea	3L	1
Pittosporum Tom Thumb	5L	2
Rudbeckia 'Goldsturm'	3L	5
Salvia nemerosa Caradonna	3L	7
Sedum 'Autumn Joy'	3L	3
Verbascum chaixii 'Album'	2.5L	7

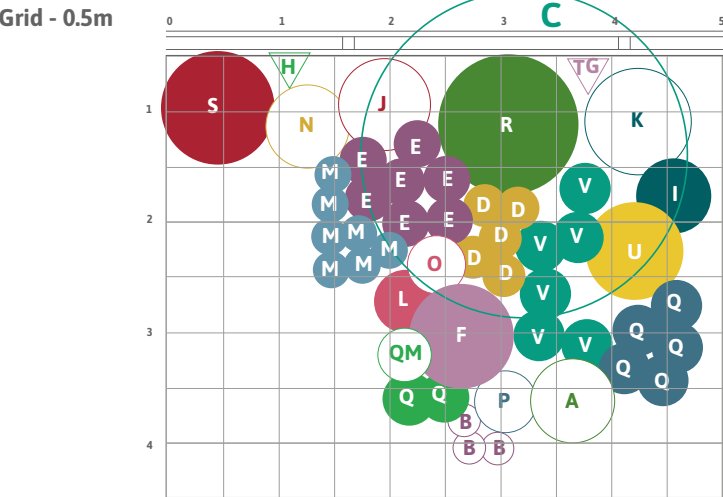
3D view of feature planting



Border Area



Planting Plan (Garden size | 15m x 9m)



This is a versatile border that suits a location next to a wall or fence.

Patricia has designed this border to bring colour and scent close to the house so that you can enjoy your garden even when you are indoors.

It features a number of climbers including the fragrant *Wisteria sinensis* 'Prolific', with its delicate violet flowers; the *Clematis* 'Étoile Violette', with its deep purple sepals; and the crimson-hued *Clematis* 'Queen Mother'.

The *Amelanchier lamarckii* (June berry) tree provides interest throughout the year, flowering in spring, producing fruit in summer, and showing good autumn colour. 'This tree is like a living bird feeder,' says Patricia. 'Finches will visit and feed on the seeds in summer, while other birds will follow in autumn.'

Brunnera macrophylla 'Jack Frost', a silver leaved foliage plant with striking heart-shaped leaves, flourishes in spring while *Geum* 'Fire Opal', great for attracting bees, blooms in a blaze of orange in early summer. They are joined by the linear *Kniphofia* 'Light of the World' and the popular *Geranium* 'Brookside', whose clear violet-blue flowers bloom for months, providing colour into early autumn.

You will find the full list of plants in the **planting plan**.

Border Plant List	
A	<i>Achillea</i> 'Moonshine'
B	<i>Aubrietia</i> axcent lilac
C	<i>Amelanchier lamarckii</i>
D	<i>Astrantia</i> 'Roma'
E	<i>Brunnera</i> 'Jack Frost'
F	<i>Chionochloa</i> rubra
G	<i>Clematis</i> 'Etoile Violette'
H	<i>Clematis</i> 'Queen Mother'
I	<i>Dianthus carthusianorum</i>
J	<i>Erysimum</i> 'Bowles Mauve'
K	<i>Euphorbia characias wulfenii</i>
L	<i>Geranium</i> 'Brookside'
M	<i>Geranium biokovo</i>
N	<i>Geranium wlasslovianum</i>
O	<i>Geum</i> 'Fire Opal'
P	<i>Kniphofia</i> 'Light of the World'
Q	<i>Nepeta</i> 'Walkers Low'
R	<i>Osmanthus delavayi</i>
S	<i>Rosa</i> 'Little White Pet'
T	<i>Rosa Wollerton Old Hall</i>
U	<i>Stipa gigantea</i>
V	<i>Nassella tenuissima</i> aka <i>Stipa tenuissima</i>
W	<i>Nepeta</i> 'Walkers Low'
X	<i>Wisteria sinensis</i> 'Prolific'

Easy Steps to Dream Gardens

To view the other 6 Dream Garden Designs visit
bordbiabloom.com/dreamgardens



The Coastal Garden
by James Purdy



The Entertainers' Garden
by Linda McKeown



The Easy Care Garden
by Oliver Schurmann



The Shared Spaces Family Garden
by Nicola Haines



The Family Friendly Garden
by Maeve O'Neill



The Nature Enthusiast's Garden
by Jane McCorkell

Common Questions

What is a planting plan?

A planting plan is a comprehensive guide which shows you what plants to plant in your garden and where to plant them in order to achieve a successful planting scheme. All seven planting plans featured in this series are easy-to-follow and can be adapted to suit your garden size and aspect.

Can I still use the plans if I don't have a 15m x 9m garden?

Yes, for each design we have focused on a specific border which can be implemented in your own garden, regardless of size. The plans include a grid in each downloadable pack which can be repeated to suit the size of your border. Staff in your local garden centre will be able to offer further advice if required.

I only have a balcony or a window box. Can I still take part?

Yes, many of the plants featured in this series are suitable for container gardening (e.g. window boxes, hanging baskets and planters). Here are some useful tips to help you get started.

Where can I buy the plants?

The designers have chosen plants that are grown in Ireland and are readily available in garden retailers around the country. All the plants are available to purchase throughout the year, while bulbs can be purchased in the autumn.

How much do the designs cost to implement in my own garden?

The cost depends on a variety of factors, including the condition of and access to your garden and whether you want to invest in hard landscaping features. The focus borders in this series are a great way to liven up your garden on a budget. Many of the perennial and annual plants featured are very affordable and can help you add colour and interest without a significant outlay.

Is the aspect of my garden important when choosing a garden design?

Aspect is the direction a garden faces – north, south east or west - and determines how much sun or shade a space receives. Each of the garden designs has been designed for a specific aspect, so before choosing a design, find out the aspect of your own garden here – [link here](#)

The direction your garden faces will determine how much sun it will get throughout the day. For example, an east-facing garden will get good morning sun.. A south-facing garden will get sun for most of the day in summer, while

gardens that face west will get sun from late morning/ early afternoon through to the evening. North-facing gardens tend to be shady and a little cooler. However, they may have sun to the rear of the garden which may be the best location for a seating area.

What other factors I should consider when choosing which garden design to plant in my own garden?

Good garden design starts with research and planning. Once you have found out your garden's aspect, the first step is to survey your existing garden. Your local garden centre is the best place to get expert advice on the following considerations:

- **Your location** – is your garden in an exposed coastal or upland location or a less exposed, sheltered location?
- **Your soil** – understanding the soil in your garden will inform what plants will work best for your plot. Soil textures vary from heavy clay to sand, while the ph. of your soil can vary from acid to alkaline. Once you understand the soil in your garden you can determine what you might need to do to improve it. The condition can be enhanced by adding soil conditioners such as farmyard manure or compost.
- **Changing levels** – is your garden flat or does it slope towards/away from the house? Is water runoff an issue? Do you need steps or terracing? This will help you plan any hard landscaping features. You should seek professional advice if you have drainage issues or notable level changes.
- **Adjoining properties** – what impact, if any, do adjoining properties have on your garden? Do neighbouring buildings or trees cast shade on your space? Do you need to add planting or structures to provide privacy in your garden?
- **Usage** – do you have small children or pets that are likely to try eating your plants? Look for plants with low/no toxicity. Your local garden centre will be able to offer further advice on this.
- **Measurements** – finally, measure your garden and plot it out on paper. Using graph paper will make it easier to plot your dimensions. Alternatively, you can print out the grid sheet we have provided at the back of this downloadable garden packs.

Once you have surveyed your garden and assessed your needs you can select the Dream Garden Plan that works best for you.

Common Questions

When should I start planting?

Pot/container-grown trees and shrubs can be planted year-round when the ground and weather conditions are favourable. It's important to remember to water trees regularly during the drier months until the tree is established, which is typically after two years.

Bareroot hedges are planted during the dormant season, which runs from November until early March. Plant these when the ground and weather conditions are favourable. As with trees, remember to water a new hedge during spells of dry weather.

Spring and summer bulbs such as Daffodils (Narcissus), Crocus, Tulips and Alliums are planted the previous autumn.

What is hard landscaping?

Hard landscaping is a term to describe the hard elements in your garden such as stone, concrete, and gravel. It generally refers to paths, patios and other built structures such as pergolas and water features.

If you are a skilled at DIY you may be able to undertake some elements of the design yourself and there are plenty of resources available in online blogs and YouTube to

help you do this. However, if you are considering adding complex hard landscaping features to your garden then you may be better served hiring a professional. Hard landscaping is a long-term investment and should last throughout the lifespan of your garden so it is important to get it right from the outset.

What basic skills do I need?

Check out www.bordbia.ie to get advice and tips that can help you hone your gardening skills.

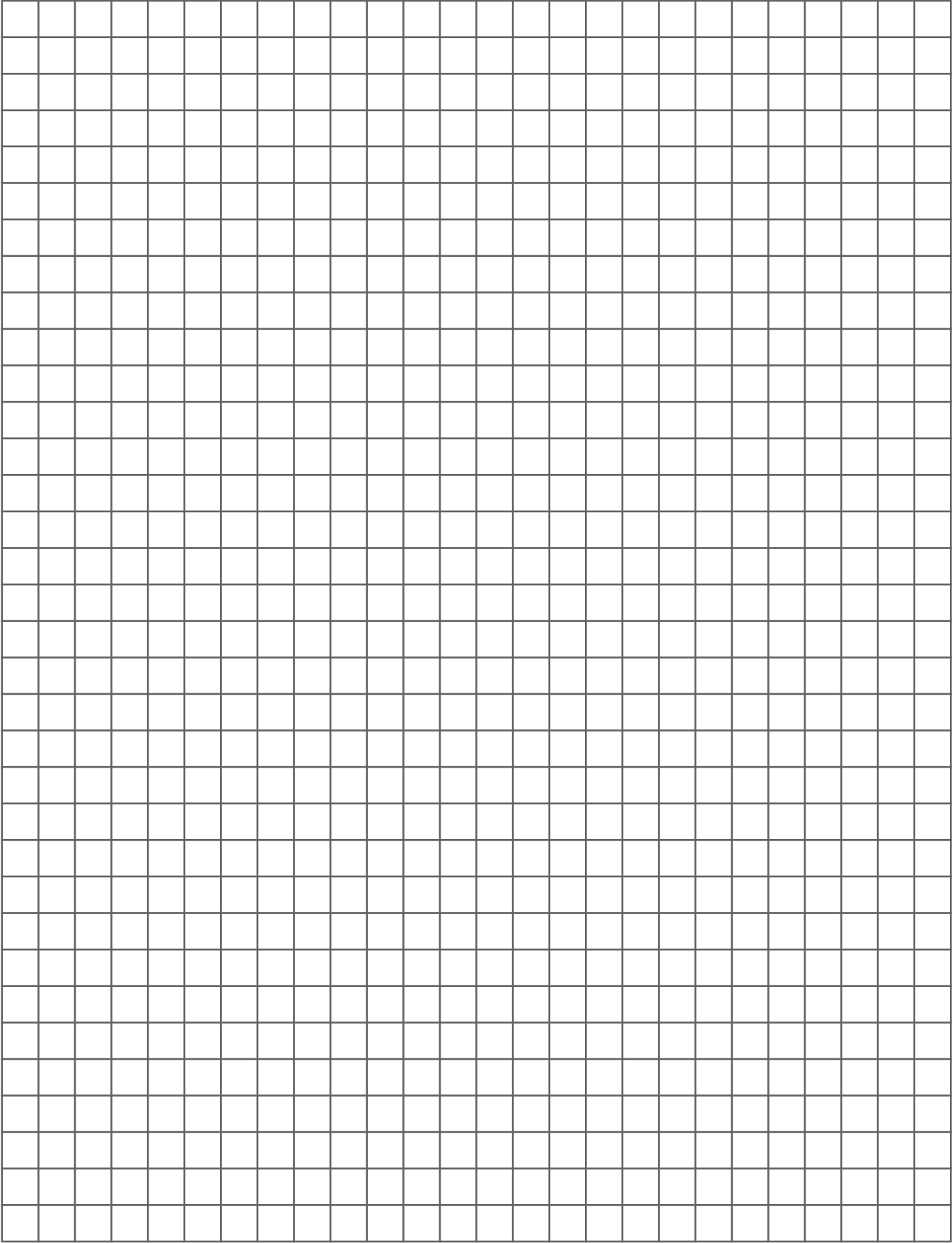
What equipment and products do I need?

These 8 gardening essential tools and products will help you get started:

- Measuring tape
- Spade
- Fork
- Hand trowel
- Hand fork
- Rake
- Secateurs
- Compost

Glossary

- **Evergreen:** An evergreen plant keeps its leaves all year.
- **Deciduous:** A deciduous plant sheds its foliage in winter and produces new leaves in spring.
- **Trees:** Trees are typically large, evergreen or deciduous plants that have a single trunk, although they can be trained into a multi-stem (see below). If your garden is small opt for a species that suits your space, such as an Acer or Amelanchier lamarckii. Your local garden centre will be able to help you choose the best option for your space.
- **Shrubs:** Shrubs are evergreen or deciduous woody plants with several main stems near the ground. Smaller than a tree, they help add form and structure to your garden.
- **Perennials:** Perennials are plants that die back to the ground in the winter and re-emerge the following year.
- **Biennials:** Biennials are plant that live for two years. They typically produce foliage in the first year and flowers the following year. Like perennials, they die back to the ground in the winter and re-emerge the following year.
- **Annuals:** Annuals are plants that live for a year or less. These are great options if you wish to add colour to your garden on a tight budget.
- **Climbers:** Climbers are deciduous and evergreen climbing plants that can be trained to climb up trellises, fences or walls.
- **Bulbs:** Bulbs, such as Daffodils or Tulips, provide seasonal colour. They are planted in the autumn and flower throughout the spring.
- **Topiary:** Topiary is the art or practice of clipping shrubs or trees into ornamental shapes.
- **Multi-stem:** A multi-stem tree is a tree that has two or more stems. These have been trained to grow together by planting two or more single-stemmed trees in one hole or pot.
- **Coppice:** To coppice means to cut a tree or shrub back to ground level periodically to stimulate growth.
- **Espalier:** An espalier is a fruit tree or ornamental shrub whose branches are trained to grow flat against a wall, supported on a lattice.
- **Pleached:** A pleached tree or shrub features branches that are entwined or interlaced to form a hedge or provide cover for an outdoor walkway.





Let's Grow
BORD BIA
Bloom

bordbiabloom.com/dreamgardens