

Let's Grow
BORD BIA
Bloom

Easy Steps to Dream Gardens

Garden Designs from Bloom Award-Winning Designers



The Family-Friendly Garden

DESIGNER: MAEVE O'NEILL

Easy Steps to Dream Gardens

To allow you to print the Planting Plan to scale at home we have included both A3 size and A4 (x2 sheets).

Note: When printing select Print Actual Size rather than scale to fit option.

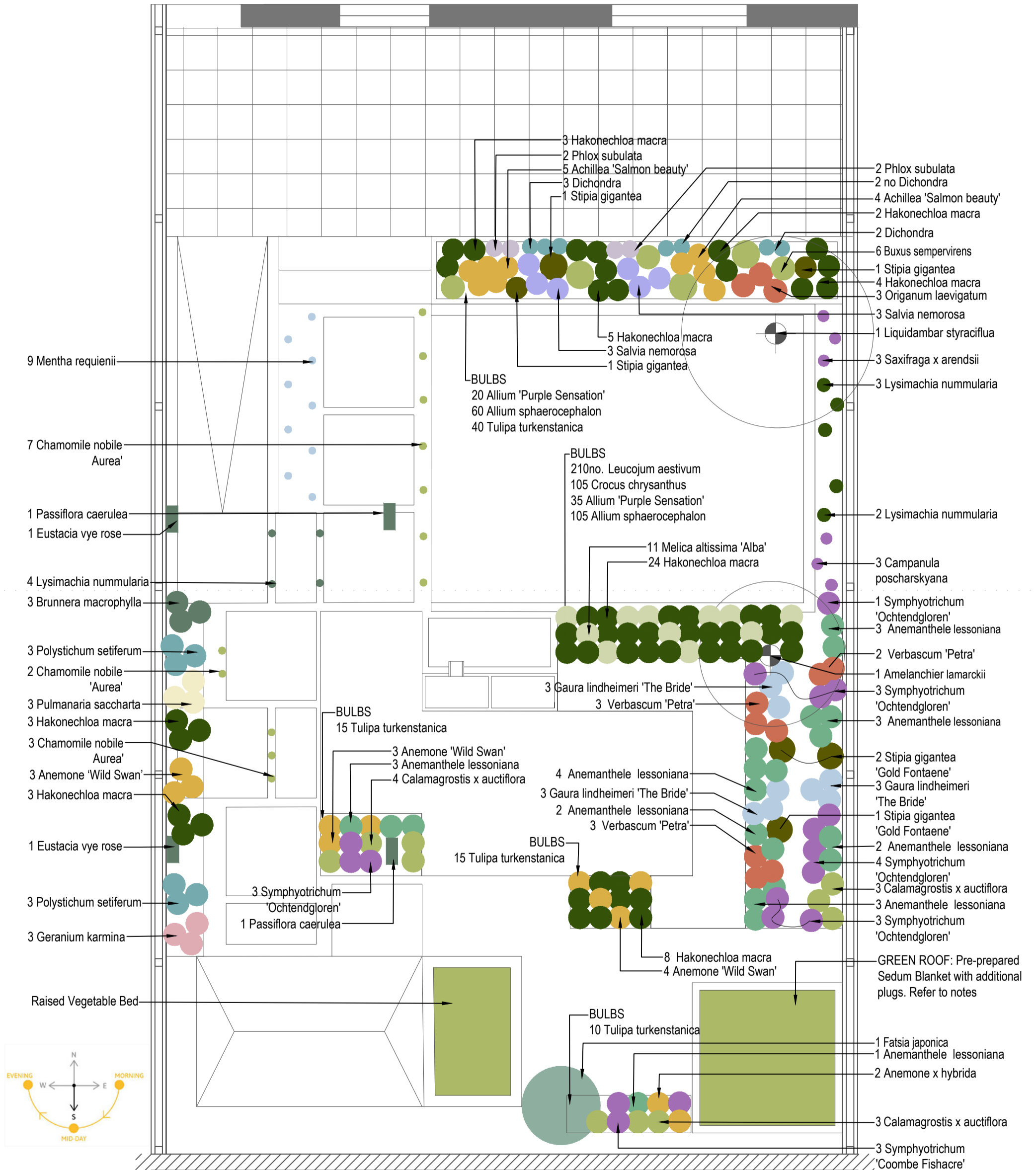
Plant List

THE FAMILY-FRIENDLY GARDEN

Plant	Pot Size	Qty
Trees		
Amelanchier lamarckii (Multistem)	15/20L	1
Liquidambar styraciflua 'Slender Silhouette'	15/20L	1
Perennial + Bulbs - AREA 1.5m² (Area 1)		
Anemanthele lessoniana	2L	1
Anemone x hybrida 'Honorine Jobert'	2L	2
Calamagrostis x acutiflora 'Karl Foerster'	2L	3
Fatsia japonica	10L	1
Symphotrichum 'Ochtendgloren'	2L	3
Spring Bulbs - Plant in groups of 10		
Tulipa turkenstanica	Grade 5/6	10
Raised Bed - Garden Veg - AREA 1.8m² (AREA 2)		
Courgettes, Onion, Lettuce, Beetroot, Green beans - personal choice (buy plug plants or from seeds)		1
Perennial + Bulbs - AREA 7m² (AREA 3)		
Anemanthele lessoniana	2L	17
Calamagrostis x acutiflora 'Karl Foerster'	2L	3
Gaura lindheimeri 'The Bride'	2L	8
Hakonechloa macra	2L	24
Melica altissima 'Alba'	2L	11
Stipa gigantea 'Gold fontaene'	2L	3
Symphotrichum 'Coombe Fishacre'	2L	11
Verbascum 'Petra'	2L	9
Spring Bulbs - Naturalised Bulbs		
Scatter the bulbs across the planting area and plant each where it lands, using a sturdy trowel or bulb planting to dig to the recommended depth for the plant. Cover with soil and gently firm around to fill any pockets of air. Bulbs to be planted in single species groups of approx 10.		
Spring Bulbs - Plant in groups of 10		
Allium 'Purple Sensation'	Grade 5/6	35
Allium sphaerocephalon	Grade 5/6	105
Crocus chrysanthus 'Cream Beauty' (reference for substitute: salmon coloured)	Grade 5/6	105
Leucojum aestivum 'Gravetye Giant'	Grade 5/6	210
Plant in groups of 3 and 5 - AREA 1.5m² (AREA 4)		
To grow amongst small boulders and pebbles against a West facing wall		
Campanula poscharskyana (Trailing bellflower)	P9	3
Lysimachia nummularia 'Aurea' (Creeping Jenny) vigorous growth	P9	5
Saxifraga x arendsii 'Touran pink'	P9	3
Groundcover between cracks in paving slabs shade or sun AREA 4m² (AREA 5)		
Mentha requienii	P9	9
Chamomile nobile evergreen	P9 or direct from seed	12
Lysimachia nummularia 'Aurea' (Creeping Jenny) vigorous growth	P9	4

Plant	Pot Size	Qty
Perennial + Bulbs AREA 1.5m² - Plant in groups of 3		
Anemone 'Wild Swan'	2L	3
Brunnera macrophylla 'Jack Frost'	2L	3
Geranium karmina (Cranesbill)	2L	3
Hakonechloa macra	2L	6
Polystichum setiferum (Soft shield fern)	2L	6
Pulmanaria saccharata	2L	3
Climbers		
Eustacia vye (Syn. Sts. Francis and Claire)	5L	2
Passiflora caerulea (Passion Flower)	5L	2
Shrubs, Perennial s + Bulbs - AREA 4m² - Plant in groups of 3		
Achillea 'Salmon beauty'	2L	8
Buxus sempervirens (Box balls)	5L	6
Dichondra 'Emerald falls' (to be planted on edge of planter to creep down)	2L	7
Hakonechloa macra	2L	14
Origanum laevigatum 'Herrenhausen'	2L	3
Phlox subulata 'Emerald Cushion Blue'	2L	4
Salvia nemorosa 'Caradonna'	2L	6
Stipa gigantea 'Gold fontaene'	2L	3
BULBS		
Allium 'Purple Sensation'	Grade 5/6	20
Allium sphaerocephalon	Grade 5/6	60
Tulipa turkenstanica	Grade 5/6	40
Green Roof - 2m² total		
Extensive – sedum and herb roofs using seeds and plug plants for a low maintenance roof. Pre prepared Sedum Blanket : PLUS feed additional plugs into this. Consider grass roof plant lists and include sedums, wildflowers, herbs and grasses:- *Traditional Plugs * Irish Provenance Native Species Plugs seed mix.		Plugs
Linaria vulgaris (Common Toadflax)		Plugs
Lotus corniculatus (Bird's-foot-trefoil)		Plugs
Papaver rhoeas 'Mother Of Pearl' (Field poppy)		Plugs
Saxifraga 'White Pixie' (Saxifrage)		Plugs
Thymus serpyllum (Creeping thyme)		Plugs
Kitchen Herbs + Bulbs in pots (AREA 8)		
Rosemary, thyme, mint, parsley, lemon balm etc.		
Perennial + Bulbs (AREA 9)		
Anemanthele lessoniana (New Zealand wind grass)	2L	3
Anemone 'Wild Swan'	2L	3
Calamagrostis x acutiflora 'Karl Foerster' (feather reed grass)	2L	4
Symphotrichum 'Coombe Fishacre' (Aster)	2L	3
Spring Bulbs - Plant in groups of 10		
Tulipa turkenstanica	Grade 5/6	10

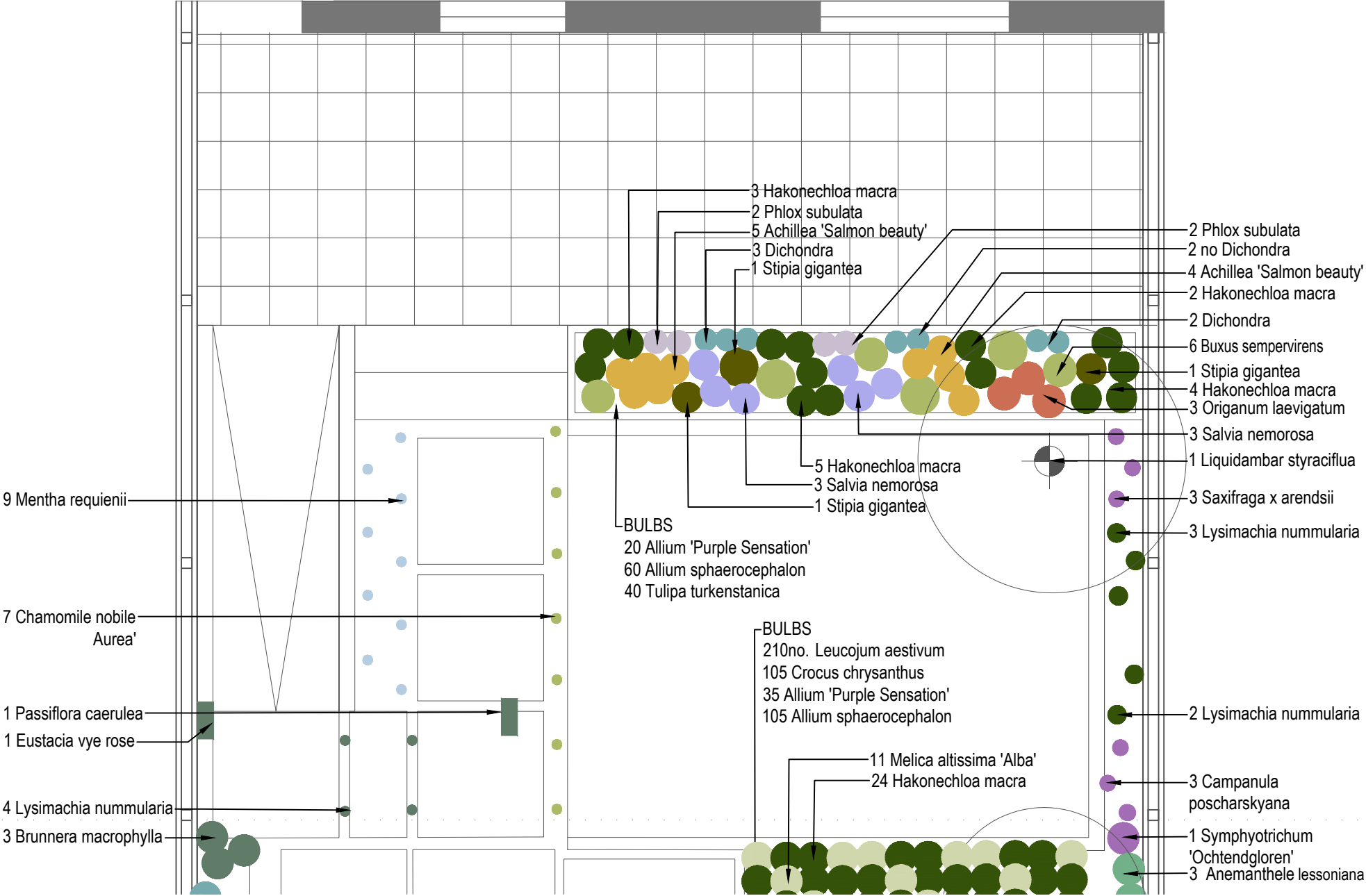
Planting Plan | The Family Friendly Garden

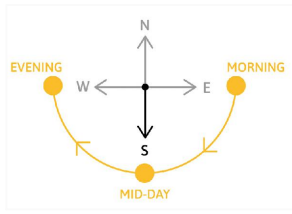
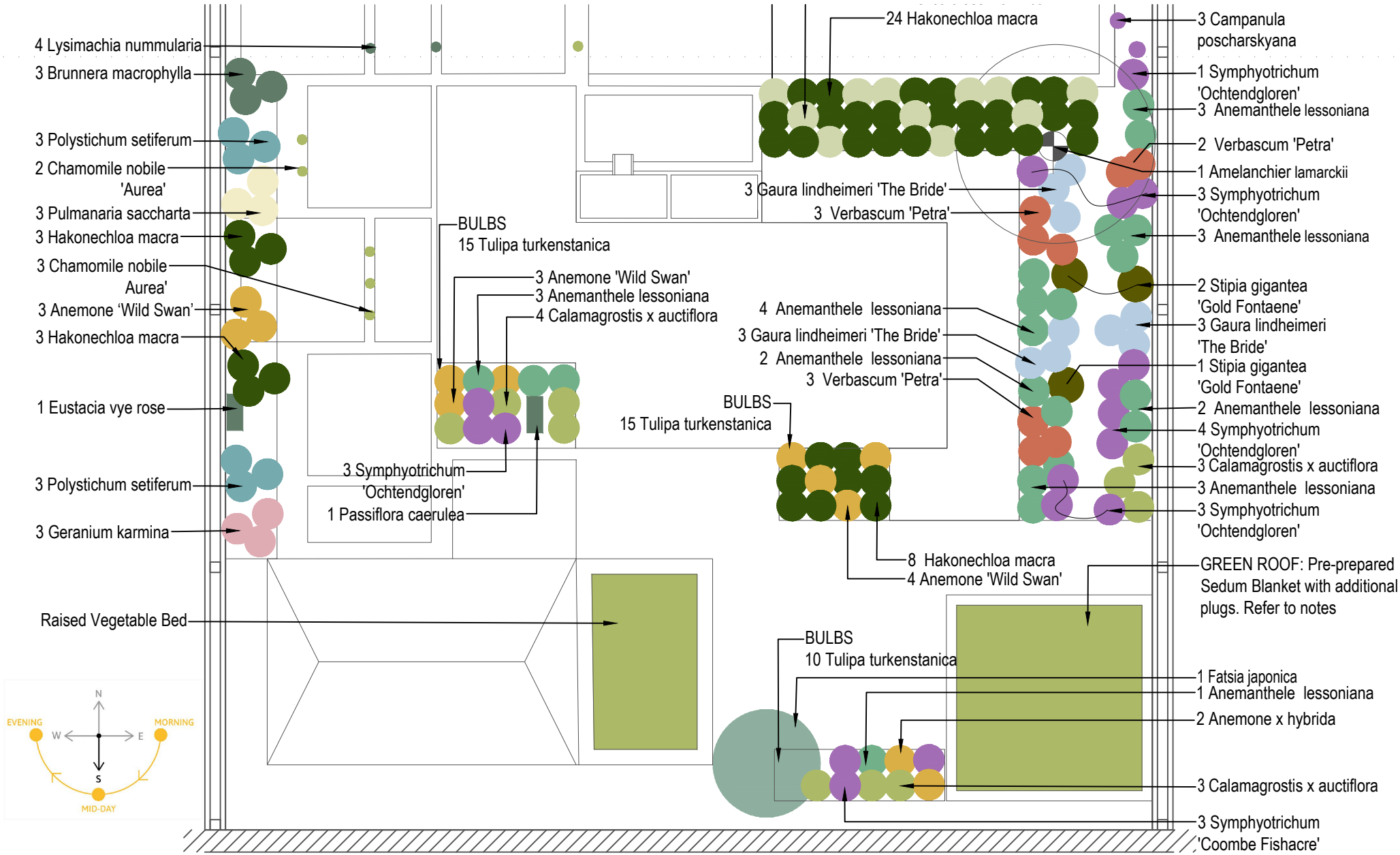


Garden Size - 9m x 15m Scale 1:50 @A3 (when printed at 100%)

PLANTING PLAN | The Family Friendly Garden

Sheet size: A4 . Scale 1:50 (when printed at 100%)





Garden Size: 9m x15m Sheet Size: A4 - Scale 1:50 (when printed at 100%)



Let's Grow
BORD BIA
Bloom

bordbiabloom.com/dreamgardens